

A SURVEY PERSPECTIVE - PROMINENT HILL MINE



*AIMS National Conference Melbourne
18 August 2011*

*Tony Chamberlayne
Senior Surveyor*



DISCLAIMER



This presentation has been prepared by OZ Minerals Limited ("OZ Minerals") and consists of written materials/slides for a presentation concerning OZ Minerals. By reviewing/attending this presentation, you agree to be bound by the following conditions.

No representation or warranty, express or implied, is made as to the fairness, accuracy, or completeness of the information, contained in the presentation or of the views, opinions and conclusions contained in this material. To the maximum extent permitted by law, OZ Minerals and its related bodies corporate and affiliates, and its respective directors, officers, employees, agents and advisers disclaim any liability (including, without limitation any liability arising from fault or negligence) for any loss or damage arising from any use of this material or its contents, including any error or omission there from, or otherwise arising in connection with it.

Some statements in this presentation relate to the future and are forward looking statements. Such statements may include, but are not limited to, statements with regard to intention, capacity, future production and grades, projections for sales growth, estimated revenues and reserves, targets for cost savings, the construction cost of new projects, projected capital expenditures, the timing of new projects, future cash flow and debt levels, the outlook for minerals and metals prices, the outlook for economic recovery and trends in the trading environment and may be (but are not necessarily) identified by the use of phrases such as "will", "expect", "anticipate", "believe" and "envisage". By their nature, forward-looking statements involve risk and uncertainty because they relate to events and depend on circumstances that will occur in the future and may be outside OZ Mineral's control. Actual results and developments may differ materially from those expressed or implied in such statements because of a number of factors, including levels of demand and market prices, the ability to produce and transport products profitably, the impact of foreign currency exchange rates on market prices and operating costs, operational problems, political uncertainty and economic conditions in relevant areas of the world, the actions of competitors, activities by governmental authorities such as changes in taxation or regulation.

Given these risks and uncertainties, undue reliance should not be placed on forward-looking statements and intentions which speak only as at the date of the presentation. Subject to any continuing obligations under applicable law or any relevant stock exchange listing rules, OZ Minerals does not undertake any obligation to publicly release any updates or revisions to any forward looking statements contained in this presentation, whether as a result of any change in OZ Minerals expectations in relation to them, or any change in events, conditions or circumstances on which any such statement is based.

Certain statistical and other information included in this presentation is sourced from publicly available third party sources and has not been independently verified.

Prominent Hill Mine Information



Location: South Australia, approx 130km SE of Coober Pedy

Ownership: 100% Listed on the ASX

First Production: February 2009

Pit Size (Final Shell) 1.5 km x 1.2 km x 500 m depth

Resource base 2.5 Mt Copper, 7.4 Moz gold, 22.6 Moz silver

Ore 79.2 Mt (23.8 MBCM)

Waste 490.7 Mt (205.6 MBCM)

Grade 1.3% CU, 0.58 g/t Au, 3.1 g/t Ag

Plant 8 Mtpa nameplate capacity; currently 10Mtpa,
crush, grind, flotation milling operation

100 – 110 K tonnes pa Cu

185,000 oz pa Au (over LOM)



Prominent Hill Mine Early construction



Prominent Hill Mine Construction



- Peak manpower 1200
- Man hours 4.3 million
- No of flights per week 37



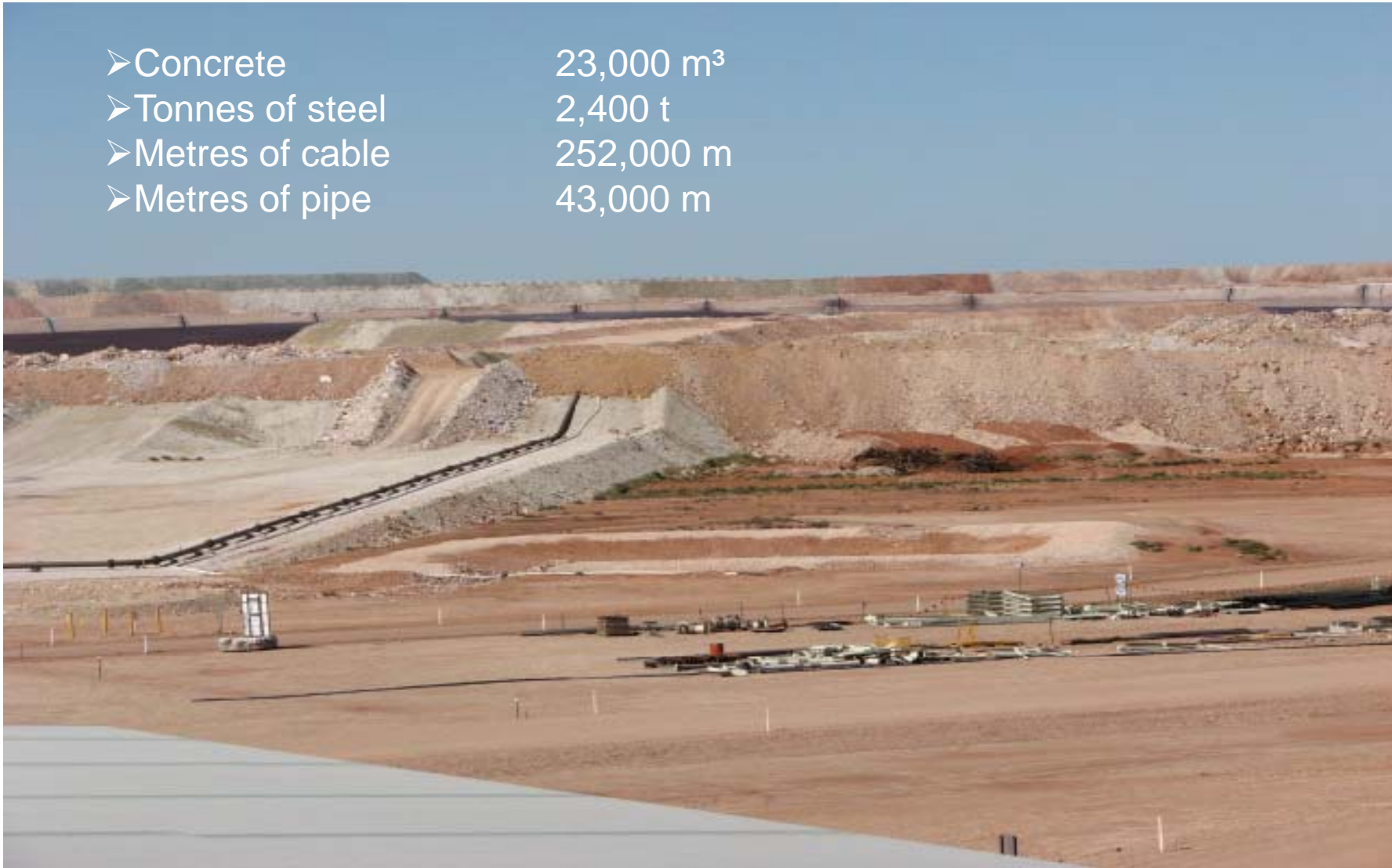
- Trucks per day 23
- Meals per day 2,400
- Fuel usage per day 113,000



Prominent Hill Mine Construction



- Concrete 23,000 m³
- Tonnes of steel 2,400 t
- Metres of cable 252,000 m
- Metres of pipe 43,000 m



CURRENT OPERATIONAL MANNING



- A workforce of approximately 800 – this includes contractors. This will increase by 150 during the underground construction phase and by 100 during development.
- We have a local workforce – 80% of our people are from South Australia.
- Mining partner – Thiess.
- Underground contractor – Byrnecut Mining
- Village Services – Sodexo
- Charter Flight services - 10 flights a week from Adelaide and six flights a week from Port Augusta.
- Site Facilities – 1200 rooms with en-suites, swimming pool, sports courts and gymnasium.
- Regular family days to bring family members to site to experience life at Prominent Hill.



PROMINENT HILL SITE

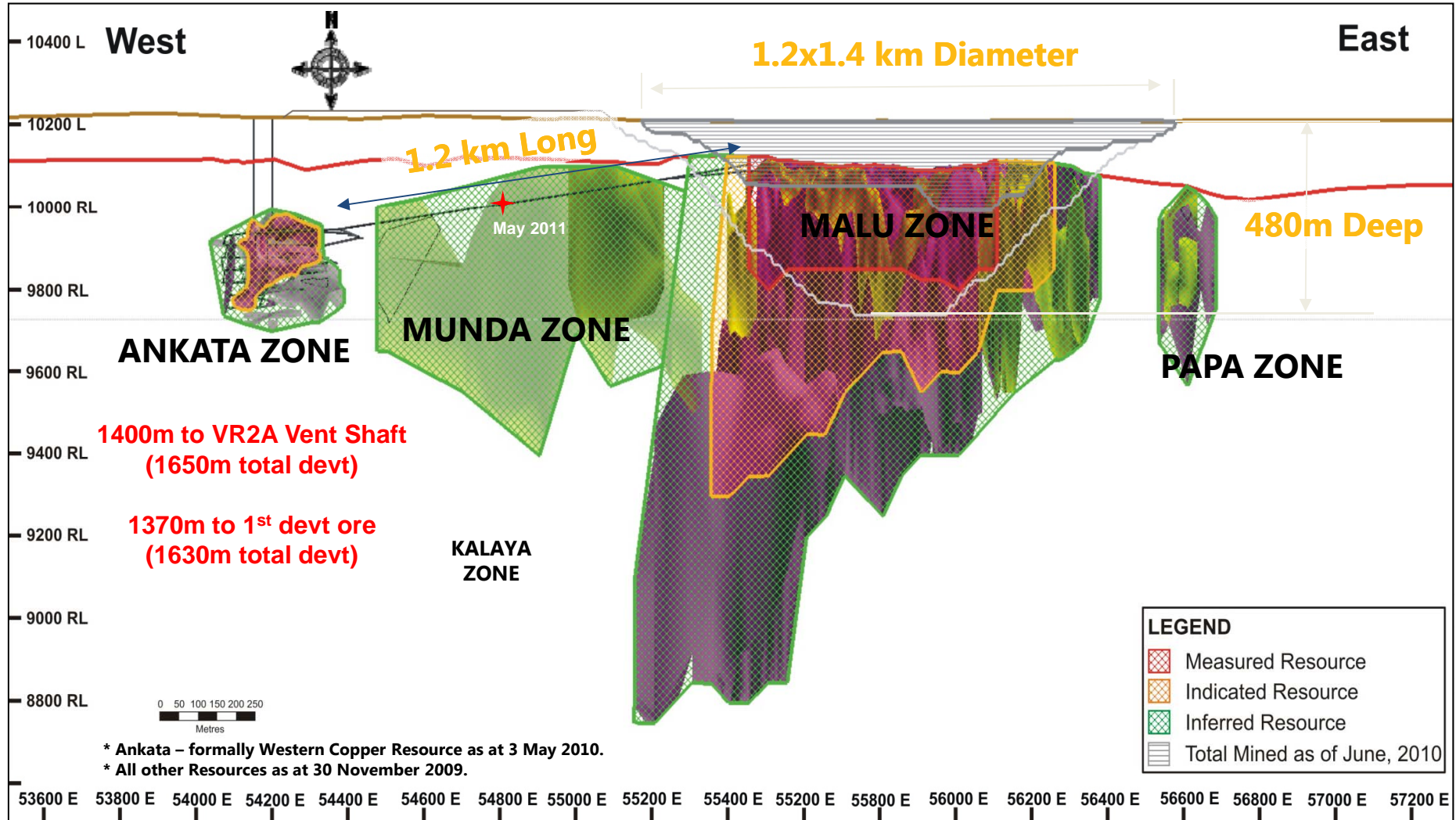


PROMINENT HILL ANKATA - UNDERGROUND



- Ankata underground will enable production of 100,000t to 110,000t copper to be maintained.
- The portal was accessed in November and advanced 1300 metres by mid August 2011.
- First ore to be produced from stoping by Q1 2012.
- Full mining rates (1.2Mtpa) by Q3 2012.

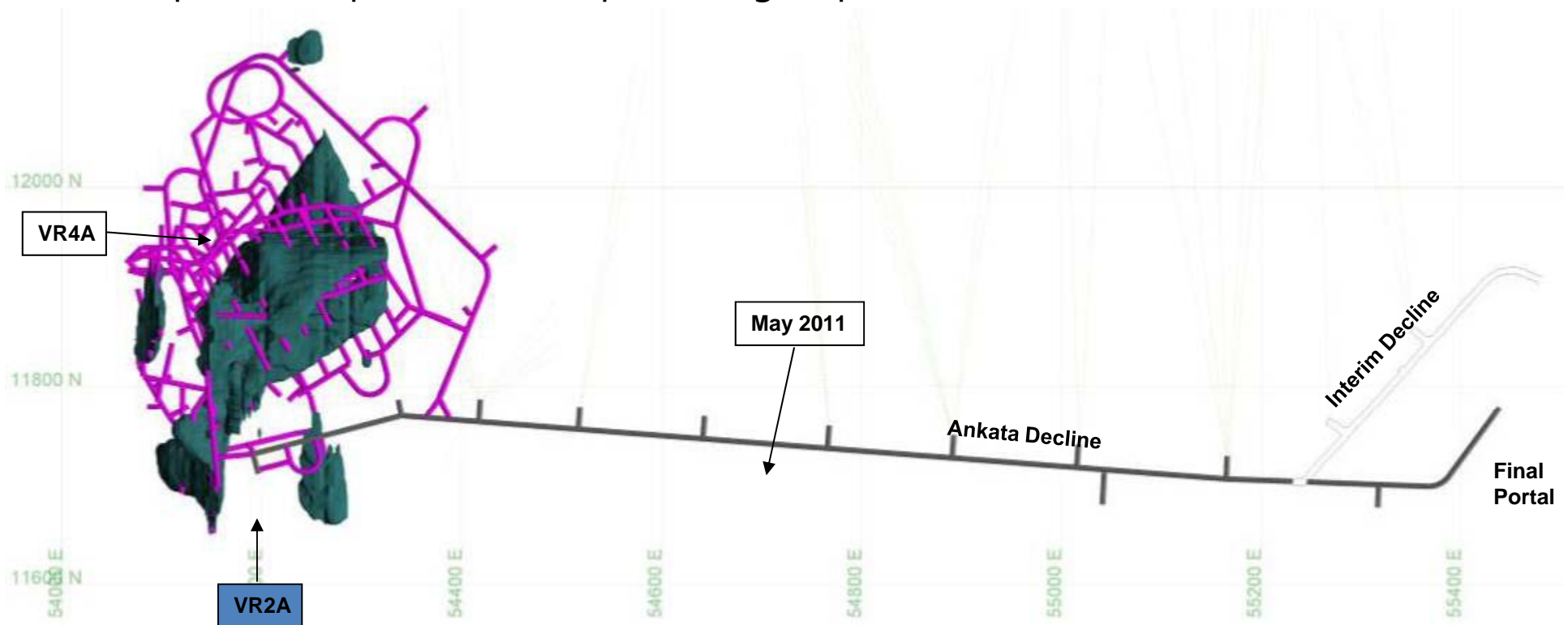
ANKATA DEPOSIT LOCATION



PROMINENT HILL – UG DEVELOPMENT PROJECT



- Ankata Decline commenced in November 2010 :
 - Interim portal established and decline advanced 1300m (now @ 250m/month)
- Requires two portals due to pit mining sequence.



PROMINENT HILL - UG DEVELOPMENT PROJECT



Interim Decline

Permanent Decline

Looking up the Declines



Ankata Decline

ANKATA DECLINE - EQUIPMENT

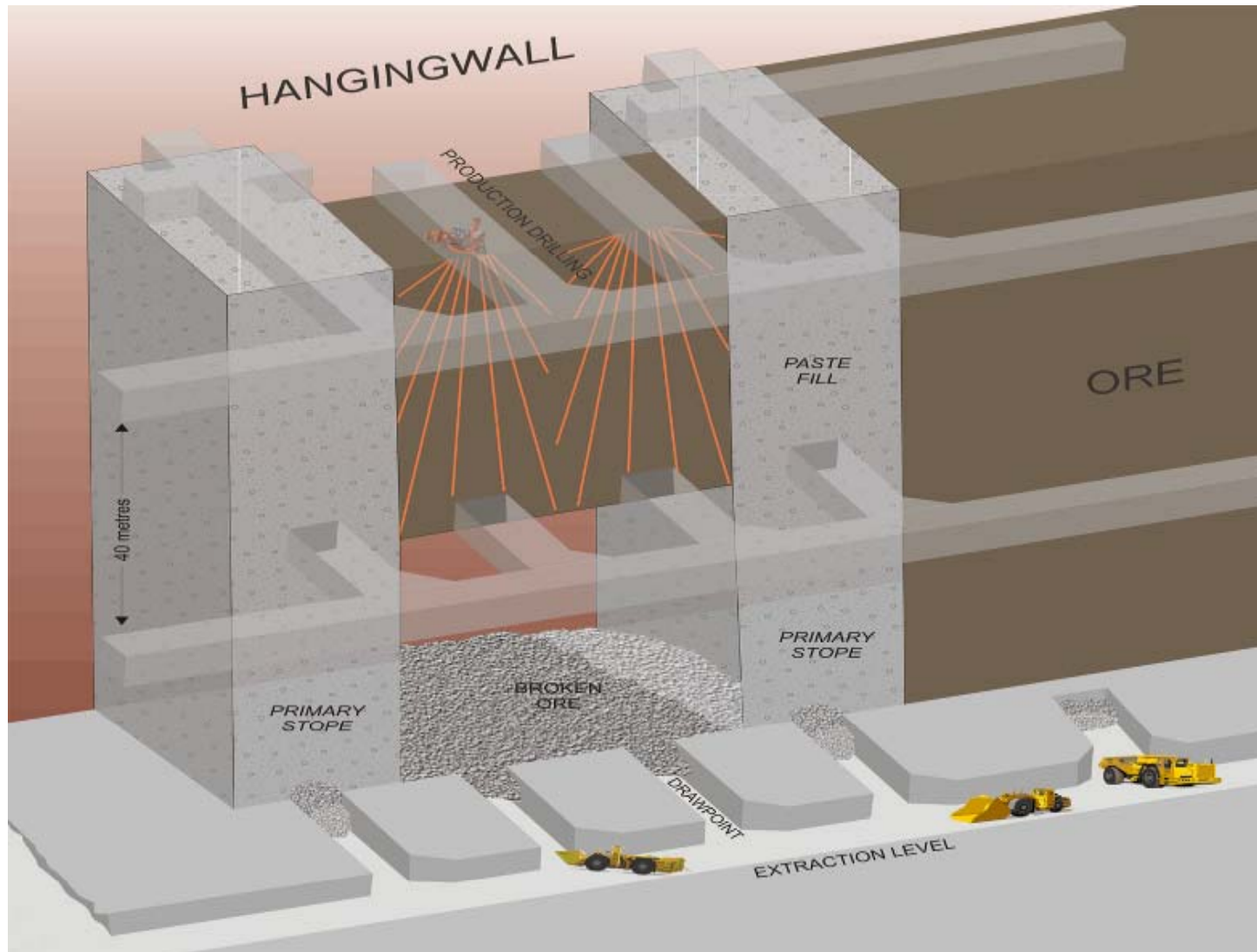


- Volvo L120F Integrated Tool Carrier (2)
- Normet Trans-Agi Concrete Truck
- Fibrecrete Machine
- Atlas Copco GA160 Electric Compressor
- Toyota Light Vehicle (6)



- Sandvik DD420 Twin Boom Drill Jumbo
- Sandvik T08 Twin Boom Drill Jumbo
- Sandvik LH621 Loader
- Caterpillar R2900G Loader
- Caterpillar AD55 Dump Truck (2)
- Caterpillar 140M Grader

LONG HOLE OPEN STOPING METHOD



OPEN CUT - EQUIPMENT



Mining contractor : Thiess

Product : High Grade (+50 % Cu) high quality copper concentrate

Digger: 4 x Liebherr 996 Excavator

650 tonnes weight, 60 tonne bucket capacity

Trucks: 31 x CAT 793

250 tonne capacity

ROM fleet : 3 x CAT 777

100 tonne capacity

Daily production : 70,000 to

100,000 BCM per day

2 – 2.5 Mt per month

Recently mined our 138 millionth BCM!!



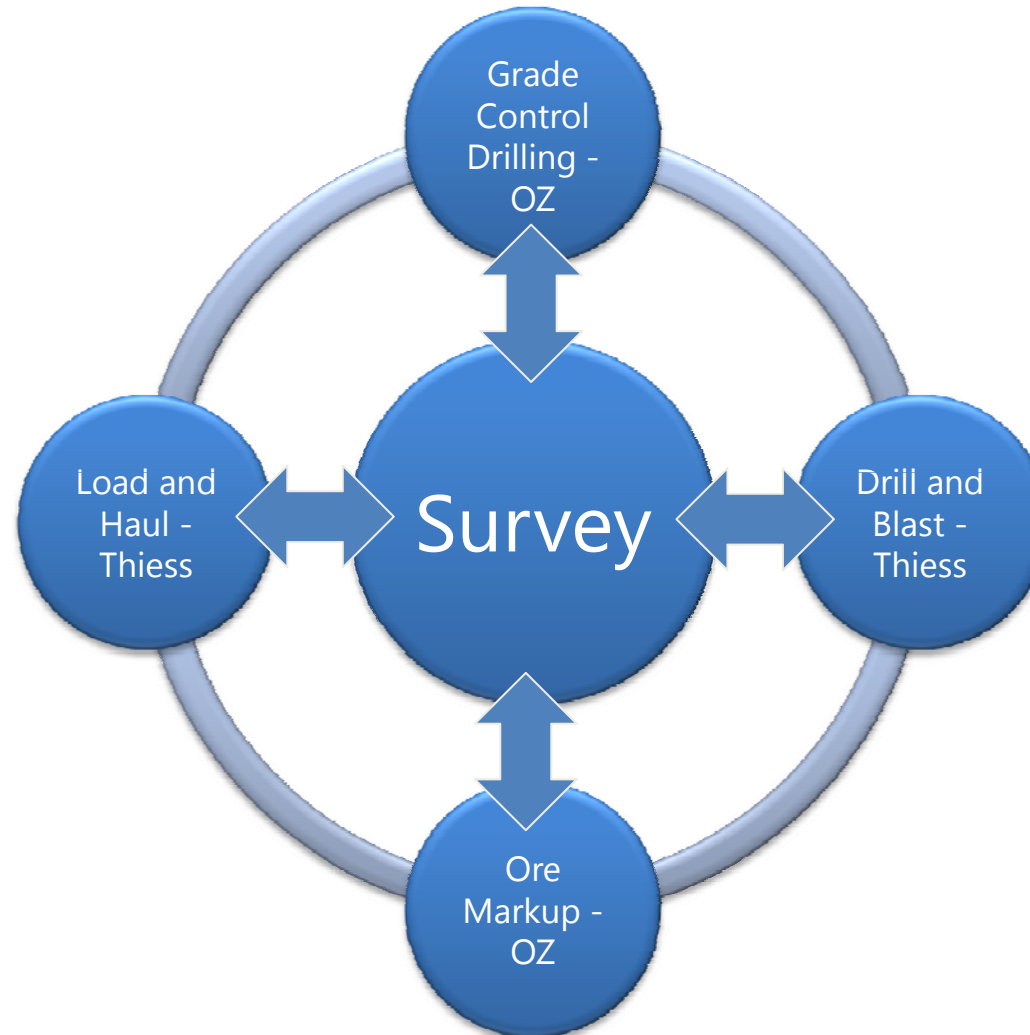
How does survey fit in?

Survey is involved in :

- Exploration drilling
- Setout of crest lines and ramps in the pit
- Setout of TBMs to maintain floor levels
- Setout of GC drilling in the pit
- QA\QC for production drilling in the pit
- Daily pickup of working faces
- Setout of ore blocks in the pit
- Providing up to date mapping of the waste dumps and ROM stockpiles
- And most importantly, providing EOM reporting values to our Mining team, Geos and Mets



Survey – key relationships



What are your staff levels for keeping it all on track?



- ❖ Our survey team consists of 5
- ❖ The total mining team consists of around 28 (OZ Tech Services)
- ❖ Work closely with the mine geology team and Thiess Tech services
- ❖ We work a 9:5 roster with staff commuting from various locations around the country



What tools do the survey team have to keep day to day operations running smoothly?



- **Software:** Trimble Geomatics Office (TGO), AutoCAD, Vulcan, Isite Studio
- **Survey Equipment:** Trimble R8 RTK GPS, S6 Total station, Isite 4400 laser scanner
- **High Precision GPS** for the Mining Fleet (Leica) in the near future

